

Postal Code 78704

Residential Statistics



January 2022

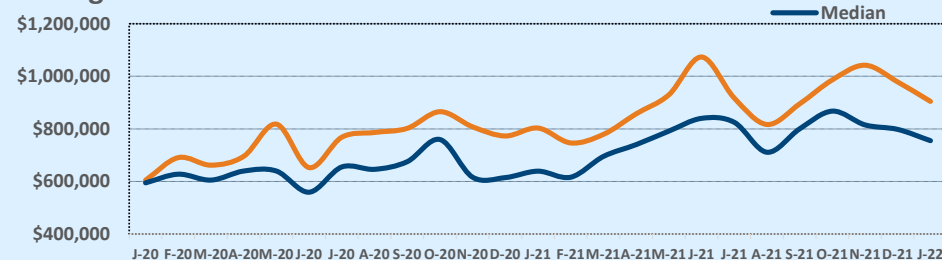
Listings	This Month			Year-to-Date		
	Jan 2022	Jan 2021	Change	2022	2021	Change
Single Family Sales	18	47	-61.7%	18	47	-61.7%
Condo/TH Sales	19	42	-54.8%	19	42	-54.8%
Total Sales	37	89	-58.4%	37	89	-58.4%
New Homes Only	1	12	-91.7%	1	12	-91.7%
Resale Only	36	77	-53.2%	36	77	-53.2%
Sales Volume	\$33,465,900	\$71,473,371	-53.2%	\$33,465,900	\$71,473,371	-53.2%
New Listings	53	87	-39.1%	53	87	-39.1%
Pending	43	2	+2050.0%	43	2	+2050.0%
Withdrawn	4	4	--	4	4	--
Expired	5	7	-28.6%	5	7	-28.6%
Months of Inventory	0.8	1.0	-17.1%	N/A	N/A	--

Average	This Month			Year-to-Date		
	Jan 2022	Jan 2021	Change	2022	2021	Change
List Price	\$873,025	\$811,090	+7.6%	\$873,025	\$811,090	+7.6%
List Price/SqFt	\$641	\$484	+32.4%	\$641	\$484	+32.4%
Sold Price	\$904,484	\$803,072	+12.6%	\$904,484	\$803,072	+12.6%
Sold Price/SqFt	\$661	\$481	+37.5%	\$661	\$481	+37.5%
Sold Price / Orig LP	102.8%	97.8%	+5.1%	102.8%	97.8%	+5.1%
Days on Market	26	45	-42.2%	26	45	-42.2%

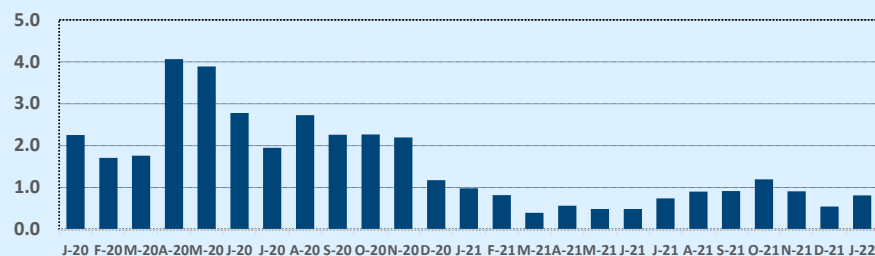
Median	This Month			Year-to-Date		
	Jan 2022	Jan 2021	Change	2022	2021	Change
List Price	\$765,000	\$644,700	+18.7%	\$765,000	\$644,700	+18.7%
List Price/SqFt	\$561	\$474	+18.3%	\$561	\$474	+18.3%
Sold Price	\$755,000	\$639,000	+18.2%	\$755,000	\$639,000	+18.2%
Sold Price/SqFt	\$581	\$460	+26.3%	\$581	\$460	+26.3%
Sold Price / Orig LP	100.0%	98.0%	+2.0%	100.0%	98.0%	+2.0%
Days on Market	9	23	-60.9%	9	23	-60.9%

Price Range	This Month			Year-to-Date		
	New	Sales	DOM	New	Sales	DOM
\$149,999 or under	--	--	--	--	--	--
\$150,000- \$199,999	--	--	--	--	--	--
\$200,000- \$249,999	1	--	--	1	--	--
\$250,000- \$299,999	1	2	53	1	2	53
\$300,000- \$349,999	2	2	73	2	2	73
\$350,000- \$399,999	5	3	9	5	3	9
\$400,000- \$449,999	--	3	2	--	3	2
\$450,000- \$499,999	--	--	--	--	--	--
\$500,000- \$549,999	1	--	--	1	--	--
\$550,000- \$599,999	2	3	42	2	3	42
\$600,000- \$699,999	6	2	8	6	2	8
\$700,000- \$799,999	2	6	25	2	6	25
\$800,000- \$899,999	7	1	7	7	1	7
\$900,000- \$999,999	5	2	67	5	2	67
\$1M - \$1.99M	12	11	16	12	11	16
\$2M - \$2.99M	7	2	35	7	2	35
\$3M+	2	--	--	2	--	--
Totals	53	37	26	53	37	26

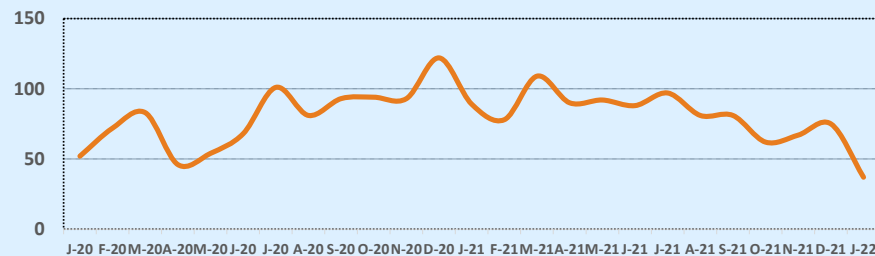
Average & Median Sales Price - Last Two Years



Months of Inventory - Last Two Years



Number of Sales - Last Two Years



Based on information from the Austin Board of REALTORS® (alternatively, from ACTRIS). Neither the Board nor ACTRIS guarantees or is in any way responsible for its accuracy. The Austin Board of REALTORS®, ACTRIS and their affiliates provide the MLS and all content therein "AS IS" and without any warranty, express or implied. Data maintained by the Board or ACTRIS may not reflect all real estate activity in the market.